

Lift Up Lindsborg!



LIFT UP LINDSBORG! IS A VOLUNTEER-LED PROGRAM DESIGNED TO HELP LINDSBORG RESIDENTS REPAINT AND RESIDE THEIR HOMES, AND WITH BASIC YARD MAINTENANCE .

Brought to Lindsborg in partnership by:



Kansas
Civic
Network



Apply and Volunteer at: <https://lindsborgcd.typeform.com/LiftUpLindsborg>





PROGRAMS:

Program 1 - LUL! Matching Grant:

Provides up to \$2500 in matching funds to repaint or reside your property in qualifying Swedish colors

Program 2 - LUL! Classic:

Provides complete cost coverage for lawn maintenance, basic exterior home repair, and repainting your property in qualifying Swedish colors with volunteers and/or contracted labor

Program 3 - LUL! Lawn Maintenance:

Provides lawn maintenance services with volunteers. All applications can qualify for this program if requested; Ongoing throughout the year

DATES TO REMEMBER:

March 15th, 2023

Classic and Matching applications are due by 5:00pm

April 2nd, 2023

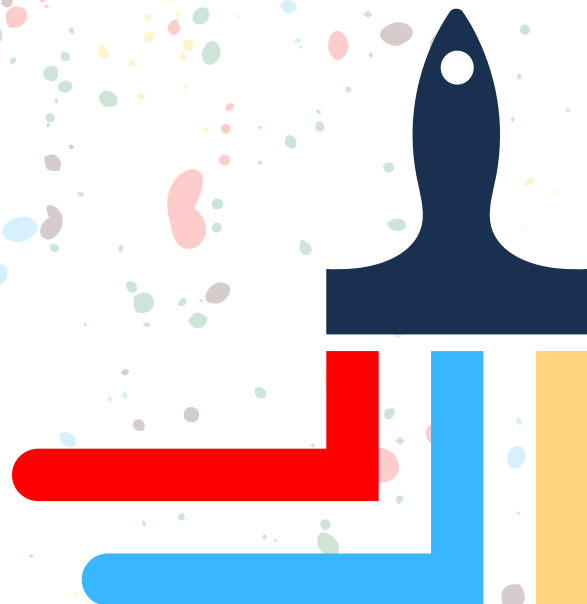
First review of applications by committee; need assessed; winners will be announced

September - October 2023

Housework begins; exact dates depending on weather conditions

October 2nd, 2023

Final day for financial matching and reimbursement; if project is still incomplete by this date, matching grant will be void and reallocated



Qualifying Swedish Colors:

Paint colors are Valspar and Sherwin Williams. If color cannot be matched exactly, close variations will be accepted.

Perennial Red



Untamed Yellow



Midnight Fog



Mellow and Mint



Morning Fog



Manila Cream



*Acceptable finishes are matte (flat) and satin only,
no glossy finishes

Acceptable Paint Brands

Valspar® Defense™

Water-Beading Technology



Outstanding:

- One-Coat Coverage
- Weather Resistance
- Adhesion
- Fade Resistance
- Mildew Resistance
- Stain Blocking

HGTV Home® by Sherwin-Williams Everlast™

Self-Cleaning Technology — Rinses With Rain or a Garden Hose



Outstanding:

- One-Coat Coverage
- Weather Resistance
- Adhesion
- Fade Resistance
- Mildew Resistance
- Stain Blocking

HGTV Home® by Sherwin-Williams WeatherShield®

Advanced All-Weather Protection™



Excellent:

- One-Coat Coverage (Select Colors)
- Weather Resistance
- Adhesion
- Fade Resistance
- Mildew Resistance

Outstanding:

- Stain Blocking

LUL! FAQs:

- **The full ask is for \$30,000. Item #1 says \$2,500 – so are you capping that at a certain # of applicants? How are you divvying up the \$30,000?**
- Applicants will a 50 percent match up to \$2,500. The matching grant program is capped at \$15,000. For example, if there are 6 selected applicants spending \$5,000 each, they will each receive \$2,500. If there are 15 applicants, the money may be divided to accommodate more projects. Any funds that is not used for the matching grant program will be reallocated to other programs.
- \$10,000 will be allocated to LUL! Classic.
- \$5,000 will be utilized for special projects and/or equipment purchases.
- **How do you determine who is approved?**
- Applications are needs-assessed based on a number of factors, including the current state of the property, financial need, homeownership status, etc. Importantly, anyone is welcome to apply. This is not needs-based program, instead focusing on assessing need within the applicant pool to distribute funds in the most equitable manner possible.
- Applications for the matching grant program and the classic program will be evaluated by a panel consisting of members from each partner organization. Two members will come from The City, two members will come from the McPherson Housing Coalition, and one member will come from the Kansas Civic Network. The committee will convene after the application deadline to review, select, and award applications. The Community Development Director will facilitate this process but will not have a vote on the committee.
- **Why Swedish colors?**
- It's tied directly to the comprehensive plan. Specifically, the section that discusses finding ways to promote Swedish history and heritage. In short, this is a way to get co-benefits from a single program, addressing issues of blight, neighborhood beautification, Swedish heritage, and community involvement through volunteerism.
- An ancillary benefit is cost. By limiting the color availability, we can purchase in bulk to drive down the cost of paint and primer.
- **With the lawn maintenance, do the residents have to supply the tools?**
- At this point, yes. We do not have yard maintenance tools to use for these projects. We have looked at purchasing some tools and have some money set aside for this purpose.
- Additionally, the McPherson Housing Coalition has a trailer of yard maintenance tools we could utilize as part of the partnership, assuming it doesn't conflict with other projects.
- **Are businesses eligible or just residents?**
- This program is currently targeted at residences, but businesses in the form of rental homes do qualify if they have owned the property for less than two years. There has been discussion of expanding the program to businesses in future years, especially if/when new appearance guidelines are adopted into code.